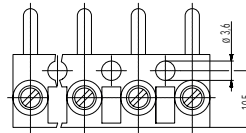
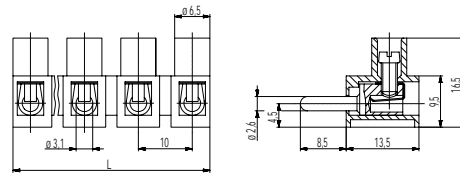


321-S(-DS)

Plug-in terminal strip
Screw connection & pin



GENERAL INFORMATION

| | |
|----------------------|--|
| Pitch | 10 mm |
| No. of poles | 2 - 12 |
| Usable with | 321-B(-DS) |
| Areas of application | Applications that require to easily open and close not energised circuits. |

TECHNICAL DATA

| | | | |
|-------------------------------|--|-------|-------|
| Clamping Range | <i>solid / stranded / AWG</i> | | |
| <i>without wire protector</i> | 0,75 - 6 mm ² / 0,75 - 2,5 mm ² / 18 - 12 AWG | | |
| <i>with wire protector</i> | 0,5 - 4 mm ² / 0,5 - 2,5 mm ² / 20 - 12 AWG | | |
| Rated Cross Section | 2,5 mm ² | | |
| Wire Stripping Length | 6 mm ± 0,5 mm | | |
| Overvoltage Category | III | III | II |
| Pollution Severity Level | 3 | 2 | 2 |
| Rated Voltage | 320 V | 320 V | 630 V |
| Rated Impulse Voltage | 4 kV | 4 kV | 4 kV |
| Rated Insulation Voltage | 450 V acc. to EN 60998-1 [1] | | |
| Rated Current | 16 A | | |
| Torque | 0,5 Nm | | |
| Other specifications | Rated values apply to use in combination with 321-B(-DS) and insulated substrates. | | |

APPROVALS

| | Current [A] | Voltage [V] | Group | AWG | [Nm] |
|--|-------------|-------------|-------|---------|----------|
| | 20 | 300 | B | 18 - 12 | 0,51 |
| | 15 | 300 | B | 26 - 10 | 0,51 [2] |
| | 10 | 300 | D,E | 26 - 10 | 0,51 [2] |

CONFIGURATIONS

| Version | Poles | Item | Article number | Item | Article number | Length (L) | PU |
|----------|-------|----------|----------------|-------------|----------------|------------|------|
| Standard | 2 | 321-S/02 | 12.821.007 | 321-S-DS/02 | 32.821.007 | 18,00 mm | 1000 |
| Standard | 3 | 321-S/03 | 13.821.007 | 321-S-DS/03 | 33.821.007 | 28,00 mm | 1000 |
| Standard | 4 | 321-S/04 | 14.821.007 | 321-S-DS/04 | 34.821.007 | 38,00 mm | 500 |
| Standard | 5 | 321-S/05 | 15.821.007 | 321-S-DS/05 | 35.821.007 | 48,00 mm | 500 |
| Standard | 6 | 321-S/06 | 16.821.007 | 321-S-DS/06 | 36.821.007 | 58,00 mm | 100 |
| Standard | 7 | 321-S/07 | 17.821.007 | 321-S-DS/07 | 37.821.007 | 68,00 mm | 100 |
| Standard | 8 | 321-S/08 | 18.821.007 | 321-S-DS/08 | 38.821.007 | 78,00 mm | 80 |
| Standard | 9 | 321-S/09 | 19.821.007 | 321-S-DS/09 | 39.821.007 | 88,00 mm | 80 |
| Standard | 10 | 321-S/10 | 20.821.007 | 321-S-DS/10 | 40.821.007 | 98,00 mm | 50 |
| Standard | 11 | 321-S/11 | 21.821.007 | 321-S-DS/11 | 41.821.007 | 108,00 mm | 50 |
| Standard | 12 | 321-S/12 | 22.821.007 | 321-S-DS/12 | 42.821.007 | 118,00 mm | 50 |

MATERIAL

| | |
|----------------------------|--|
| Moulding | PA, natural, V-2 |
| Comparative Tracking Index | CTI ≥ 600 |
| Insulating Group | I |
| Temperature Range | -40°F up to 100°C |
| Terminal body | Nickel plated brass |
| Screw | M3; zinc plated steel, blue passivated |
| Wire protector | Tin plated tin bronze |
| Plug | Nickel plated brass |

OPTIONS / ACCESSORIES

- Marking options on the screw guides
- Leading plug for the protective conductor pole

[1] with insulating base
[2] for 321-S-DS: 26 - 12 AWG

